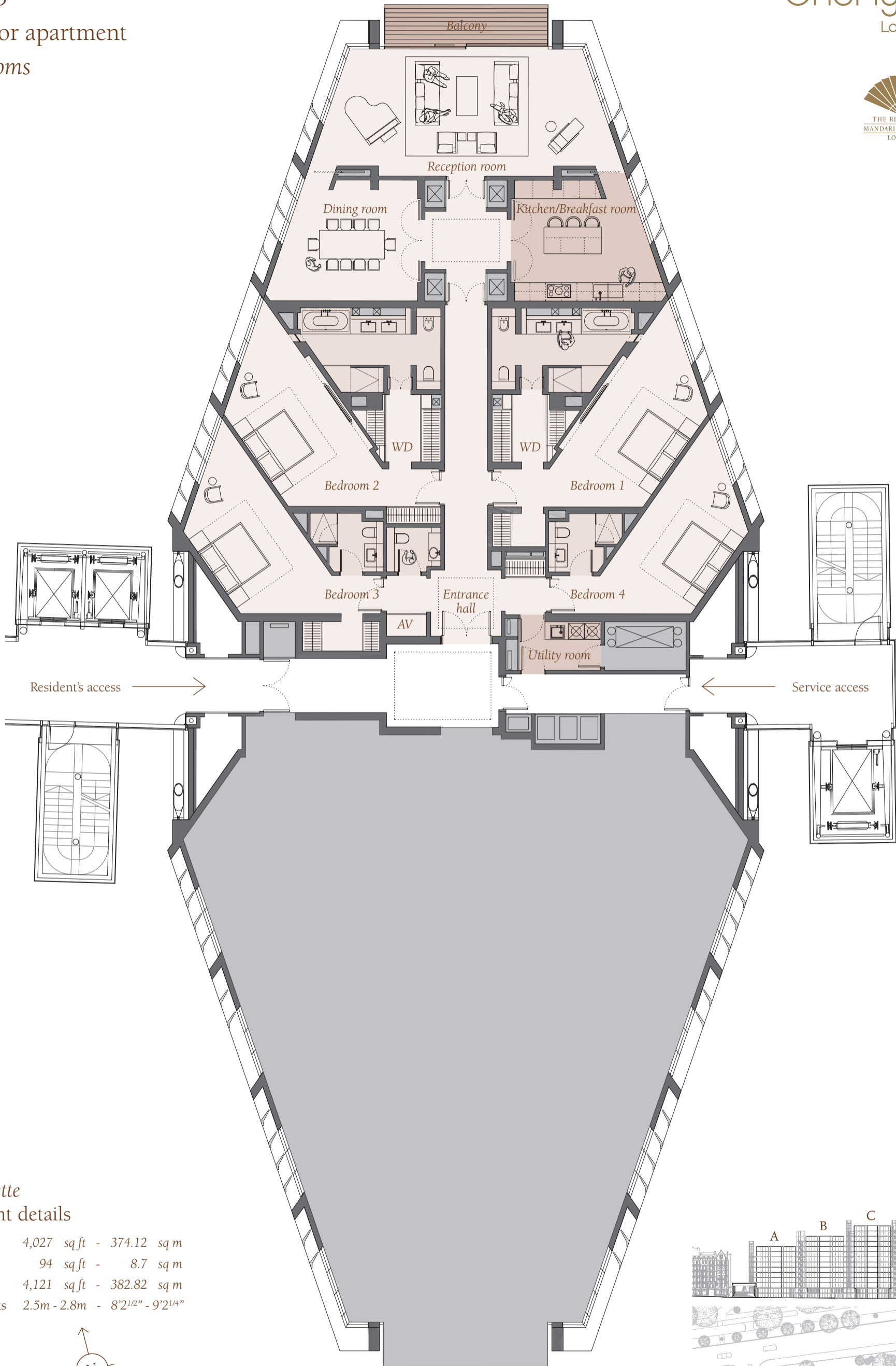


Apartment D.03.1
 Level 03
 Half floor apartment
 4 Bedrooms

North - Park views

OneHydePark
 London



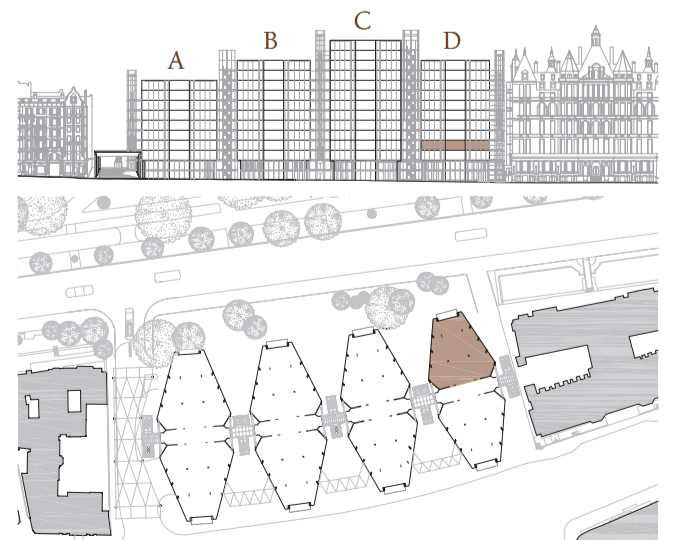
Dark Palette
 Apartment details

Internal area	4,027 sq ft - 374.12 sq m
External area	94 sq ft - 8.7 sq m
Total area	4,121 sq ft - 382.82 sq m
Ceiling heights	2.5m - 2.8m - 8'2 1/2" - 9'2 1/4"



Scale: ~ 1:150
 Fourth Edition

South - City views



Candy & Candy are the appointed interior designers for One Hyde Park.

Note: All plans are indicative only and are subject to change due to design coordination.

Important Notice: In accordance with our duties under the Misrepresentation Act 1967 and the Mis-description Act 1991, these details have been prepared in good faith but are not intended to constitute part of an offer of contract or create any contractual relationship. No description or information of any kind provided by Project Grande (Guernsey) Limited (PGGL) or Mandarin Oriental Hotel Group (MOHG) or its or their Agents, whether written or verbal, contained in these Particulars or elsewhere ("Information") may be relied upon as a statement of representation, warranty or fact. Neither PGGL, MOHG nor its or their Agents have any authority to make any representation or warranty and accordingly any Information is given entirely without responsibility on the part of PGGL, MOHG or its or their Agents. All plans shown are indicative and cannot be guaranteed to represent the complete interiors or exteriors of One Hyde Park ("the Scheme"). Any areas, measurements or distances given are approximate only. It is not possible to scale exactly from these drawings. Any reference to alterations to or use of any part of the property is not a statement that any necessary planning, building regulations or other consent has been obtained. These matters must be verified by any buyer/lessee. Any buyer/lessee must satisfy himself by inspection or otherwise as to the correctness of any Information given. © All rights reserved to Project Grande (Guernsey) Limited (PGGL) and Mandarin Oriental Hotel Group (MOHG).